

Product Datasheet

POLR2A antibody (orb535105)

Description

POLR2A antibody

Species/Host

Rabbit

Reactivity

Human

Conjugation

Unconjugated

Tested

ChIP, ELISA, IF, WB

Applications

Immunogen

Anti-POL II antibody was prepared from whole rabbit serum produced by repeated immunizations with a synthetic peptide corresponding to the n-terminal portion of human POL II conjugated to Keyhole Limpet Hemocyanin (KLH).

Preservatives

0.01% (w/v) Sodium Azide

Form/Appearance

Liquid (sterile filtered)

Concentration

1.0 mg/ml

Storage

Store vial at -20° C or below prior to opening. This vial contains a relatively low volume of reagent (25 µL). To minimize loss of volume dilute 1:10 by adding 225 µL of the buffer stated above directly to the vial. Recap, mix thoroughly and briefly centrifuge to collect the volume at the bottom of the vial. Use this intermediate dilution when calculating final dilutions as recommended below. Store the vial at -20°C or below after dilution. Avoid cycles of freezing and thawing.

Note

For research use only

Application notes

Anti-POL II antibody has been tested in ChIP and ELISA, and is likely suitable for western blotting and immunofluorescence assays. Positive controls used in ChIP were EGF stimulated NR4A1 5', NR4A1 3' and FOS 3'. The negative control was total rabbit IgG.

Isotype

IgG

Clonality

Polyclonal

Purity

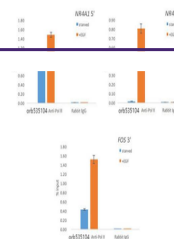
This affinity purified antibody is directed against human POL II. This product was affinity purified from monospecific antiserum by immunoaffinity purification. Blast analysis of the sequence of the immunogen shows 100% identity with mouse and Chinese hamster.

Uniprot ID

[P24928](#)

NCBI

[NP_000928.1](#)



Chromatin
Immunoprecipitation
of Rabbit ...