

---

## Product Datasheet

### SPTBN2 Antibody / Spectrin beta III (orb534451)

**Description**

Spectrins are principle components of a cell's

alpha a...

**Species/Host**

Rabbit

**Reactivity**

Human

**Conjugation**

Unconjugated

**Tested Applications**

FACS, IHC-P, WB

**Immunogen**

Amino acids 356-475 from the human protein were used as the immunogen for this recombinant SPTBN2 antibody.

**Preservatives**

0.2 mg/ml in 1X PBS with 0.1 mg/ml rAlbumin (US sourced) and 0.05% sodium azide

**Storage**

Store the recombinant SPTBN2 antibody at 2-8°C (with azide) or aliquot and store at -20°C or colder (without azide).

**Note**

For research use only

**Application notes**

Optimal dilution of the recombinant SPTBN2 antibody should be determined by the researcher.1. The prediluted format is supplied in a dropper bottle and is optimized for use in IHC. After epitope retrieval step (if required), drip mAb solution onto the tissue section and incubate at RT for 30 min.

**Formula**

0.2 mg/ml in 1X PBS with 0.1 mg/ml BSA (US sourced) and 0.05% sodium azide

**Isotype**

Rabbit IgG, kappa

**Clonality**

Recombinant

**Purity**

Protein A affinity chromatography

**Uniprot ID**

[O15020](#)

**Hazard Information**

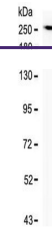
This recombinant SPTBN2 antibody is available for research use only.

**Dilution Range**

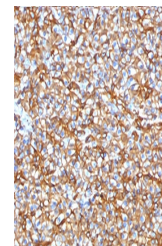
Western blot: 1-2ug/ml, Flow cytometry: 1-2ug/million cells in 0.1ml, Immunohistochemistry (FFPE): 1-2ug/ml for 30 min at RT, Prediluted IHC only format: incubate for 30 min at RT (1)

**Expiration Date**

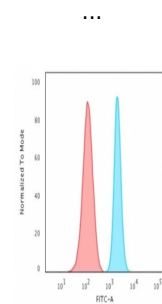
12 months from date of receipt.



Western blot testing of human PANC-1 cel...



IHC testing of FFPE human pancreas with



FACS testing of fixed and permeabilized