

---

## Product Datasheet

### Cytokeratin 18 Antibody (orb534403)

**Description**

Keratin 18 (KRT18) is a type I cytokeratin. It is, together

**Species/Host**

Rabbit

**Reactivity**

Human

**Conjugation**

Unconjugated

**Tested Applications**

FACS, IHC-P, WB

**Immunogen**

Human full length recombinant protein was used as the immunogen for the recombinant Keratin 18 antibody.

**Preservatives**

0.2 mg/ml in 1X PBS with 0.1 mg/ml rAlbumin (US sourced) and 0.05% sodium azide

**Storage**

Store the recombinant Keratin 18 antibody at 2-8°C (with azide) or aliquot and store at -20°C or colder (without azide).

**Note**

For research use only

**Application notes**

The stated application concentrations are suggested starting points. Titration of the recombinant Keratin 18 antibody may be required due to differences in protocols and secondary/substrate sensitivity.1. The prediluted format is supplied in a dropper bottle and is optimized for use in IHC. After epitope retrieval step (if required), drip mAb solution onto the tissue section and incubate at RT for 30 min.

**Formula**

0.2 mg/ml in 1X PBS with 0.1 mg/ml BSA (US sourced) and 0.05% sodium azide

**Isotype**

Rabbit IgG, kappa

**Clonality**

Recombinant

**Purity**

Protein A affinity chromatography

**Uniprot ID**

**P05783**

**Hazard Information**

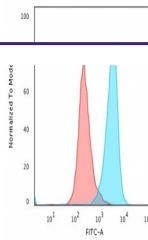
This recombinant Keratin 18 antibody is available for research use only.

**Dilution Range**

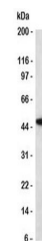
Flow cytometry: 1-2ug/million cells, Western blot: 1-2ug/ml, Immunohistochemistry (FFPE): 1-2ug/ml for 30 min at RT, Prediluted IHC only format: incubate for 30 min at RT (1)

**Expiration Date**

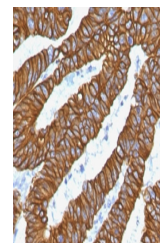
12 months from date of receipt.



Flow cytometry testing of PFA-fixed huma...



Western blot testing of human HCT116 ant...



IHC staining of FFPE human colon carinom...