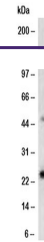

Product Datasheet

Mammaglobin A Antibody / SCGB2A2 (orb534324)

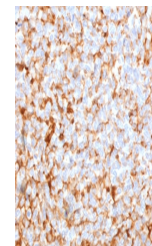
Description

SCGB2A2 is a member of the superfamily of

Species/Host	some...
Reactivity	Rabbit
Conjugation	Human
Tested Applications	Unconjugated
Immunogen	IHC-P, WB
Preservatives	Full length recombinant human protein was used as the immunogen for the recombinant Mammaglobin A antibody.
Storage	0.2 mg/ml in 1X PBS with 0.1 mg/ml rAlbumin (US sourced) and 0.05% sodium azide
Note	Store the recombinant Mammaglobin A antibody at 2-8°C (with azide) or aliquot and store at -20°C or colder (without azide).
Application notes	For research use only
Formula	The stated application concentrations are suggested starting points. Titration of the recombinant Mammaglobin A antibody may be required due to differences in protocols and secondary/substrate sensitivity.1. The prediluted format is supplied in a dropper bottle and is optimized for use in IHC. After epitope retrieval step (if required), drip mAb solution onto the tissue section and incubate at RT for 30 min.
Isotype	0.2 mg/ml in 1X PBS with 0.1 mg/ml BSA (US sourced) and 0.05% sodium azide
Clonality	Rabbit IgG, kappa
Purity	Recombinant
Uniprot ID	Protein A affinity chromatography
Hazard Information	Q13296
Dilution Range	This recombinant Mammaglobin A antibody is available for research use only.
Expiration Date	Western blot: 1-2ug/ml, Immunohistochemistry (FFPE): 1-2ug/ml for 30 min at RT, Prediluted IHC only format: incubate for 30 min at RT (1)
	12 months from date of receipt.



Western blot testing of human MCF-7 cell...



IHC testing of FFPE human breast carcino...