
Product Datasheet

**RPSA Antibody / 40S Ribosomal protein SA
(orb534304)**

Description

Required for the assembly and/or stability of the 40S

Species/Host

Mouse

Reactivity

Human

Conjugation

Unconjugated

Tested Applications

FACS, IF, IHC-P, WB

Immunogen

Recombinant full length protein was used as the immunogen for the RPSA antibody.

Preservatives

0.2 mg/ml in 1X PBS with 0.1 mg/ml rAlbumin (US sourced) and 0.05% sodium azide

Storage

Store the RPSA antibody at 2-8°C (with azide) or aliquot and store at -20°C or colder (without azide).

Note

For research use only

Application notes

The stated application concentrations are suggested starting points. Titration of the RPSA antibody may be required due to differences in protocols and secondary/substrate sensitivity.¹ The prediluted format is supplied in a dropper bottle and is optimized for use in IHC. After epitope retrieval step (if required), drip mAb solution onto the tissue section and incubate at RT for 30 min.

Formula

0.2 mg/ml in 1X PBS with 0.1 mg/ml BSA (US sourced) and 0.05% sodium azide

Isotype

Mouse IgG

Clonality

Monoclonal

Purity

Protein G affinity chromatography

Uniprot ID
P08865
Hazard Information

This RPSA antibody is available for research use only.

Dilution Range

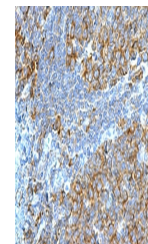
Immunofluorescence: 1-2ug/ml, Flow cytometry: 1-2ug/million cells, Western blot: 1-2ug/ml, Immunohistochemistry (FFPE): 1-2ug/ml for 30 min at RT, Prediluted IHC only format: incubate for 30 min at RT (1)

Expiration Date

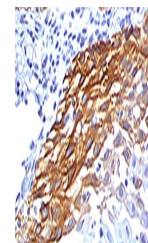
12 months from date of receipt.



Western blot testing of human HeLa cell ...



IHC testing of FFPE human tonsil stained...



IHC testing of FFPE human cervical carci...