

---

## Product Datasheet

### Placental Alkaline Phosphatase Antibody / ALPP (orb534270)

**Description**

There are at least four distinct but related alkaline


**Species/Host**

Rabbit

**Reactivity**

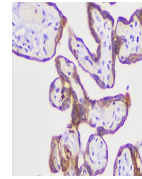
Human

**Conjugation**

Unconjugated

**Tested Applications**

IHC-P



IHC testing of FFPE human placenta with ...

**Immunogen**

Recombinant full-length human protein was used as the immunogen for the recombinant PLAP antibody.

**Preservatives**

0.2 mg/ml in 1X PBS with 0.1 mg/ml rAlbumin (US sourced) and 0.05% sodium azide

**Storage**

Store the recombinant PLAP antibody at 2-8°C (with azide) or aliquot and store at -20°C or colder (without azide).

**Note**

For research use only

**Application notes**

Optimal dilution of the recombinant PLAP antibody should be determined by the researcher.1. The prediluted format is supplied in a dropper bottle and is optimized for use in IHC. After epitope retrieval step (if required), drip mAb solution onto the tissue section and incubate at RT for 30 min.

**Formula**

0.2 mg/ml in 1X PBS with 0.1 mg/ml BSA (US sourced) and 0.05% sodium azide

**Isotype**

Rabbit IgG, kappa

**Clonality**

Recombinant

**Purity**

Protein A affinity chromatography

**Uniprot ID**

**P05187**

**Hazard Information**

This recombinant PLAP antibody is available for research use only.

**Dilution Range**

Immunohistochemistry (FFPE): 0.5-1ug/ml for 30 min at RT, Prediluted IHC only format: incubate for 30 min at RT (1)

**Expiration Date**

12 months from date of receipt.