
Product Datasheet

**Adipophilin Antibody / Perilipin 2 / ADRP / PLIN2
(orb534268)**

Description

The protein encoded by this gene belongs to the

intracellula...

Species/Host

Rabbit

Reactivity

Human

Conjugation

Unconjugated

Tested Applications

IHC-P, WB

Immunogen

A portion of amin acids 249-376 from the human protein were used as the immunogen for this recombinant Perilipin 2 antibody.

Preservatives

0.2 mg/ml in 1X PBS with 0.1 mg/ml rAlbumin (US sourced) and 0.05% sodium azide

Storage

The recombinant Perilipin 2 antibody (with azide) can be stored at 2-8°C. The azide-free format should be aliquoted and stored at -20°C or colder.

Note

For research use only

Application notes

Titering of the recombinant Perilipin 2 antibody may be required for optimal performance.1. The prediluted format is supplied in a dropper bottle and is optimized for use in IHC. After epitope retrieval step (if required), drip mAb solution onto the tissue section and incubate at RT for 30 min.

Formula

0.2 mg/ml in 1X PBS with 0.1 mg/ml BSA (US sourced) and 0.05% sodium azide

Isotype

Rabbit IgG, kappa

Clonality

Recombinant

Purity

Protein A affinity chromatography

Uniprot ID

[Q99541](#)

Hazard Information

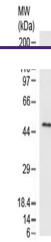
This recombinant Perilipin 2 antibody is available for research use only.

Dilution Range

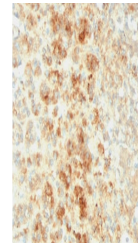
Immunohistochemistry (FFPE): 1-2ug/ml, Prediluted IHC only format: incubate for 30 min at RT (1), Western blot: 1-2ug/ml

Expiration Date

12 months from date of receipt.



Western blot testing of human liver lysa...



IHC testing of FFPE human adrenal tissue...