
Product Datasheet

PU.1 Antibody / SPI1 (orb534180)

Description

Binds to the PU-box, a purine-rich DNA sequence (5'-

Species/Host

Mouse

Reactivity

Human

Conjugation

Unconjugated

Tested Applications

IF, IHC-P, WB

Immunogen

A portion of amino acids 16-170 from the human protein was used as the immunogen for the PU.1 antibody.

Preservatives

0.2 mg/ml in 1X PBS with 0.1 mg/ml rAlbumin (US sourced) and 0.05% sodium azide

Storage

Store the PU.1 antibody at 2-8°C (with azide) or aliquot and store at -20°C or colder (without azide).

Note

For research use only

Application notes

The stated application concentrations are suggested starting points. Titration of the PU.1 antibody may be required due to differences in protocols and secondary/substrate sensitivity.

Formula

0.2 mg/ml in 1X PBS with 0.1 mg/ml BSA (US sourced) and 0.05% sodium azide

Isotype

Mouse IgG2b, kappa

Clonality

Monoclonal

Purity

Protein G affinity chromatography

Uniprot ID

[P17947](#)

Hazard Information

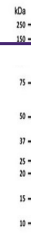
This PU.1 antibody is available for research use only.

Dilution Range

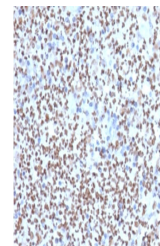
Immunohistochemistry (FFPE): 1-2ug/ml for 30 min at RT, Immunofluorescence: 1-2ug/ml, Western blot: 1-2ug/ml

Expiration Date

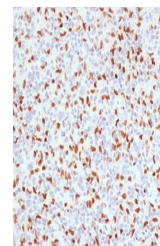
12 months from date of receipt.



Western blot testing of human THP-1 cell...



IHC staining of FFPE human lymph node wi...



IHC staining of FFPE human Hodgkin's lym...