
Product Datasheet

CD10 Antibody / Neprilysin (orb534168)

Description

Nephrilysin, also known as membrane metallo-

cluster...

Species/Host

Mouse

Reactivity

Human

Conjugation

Unconjugated

Tested Applications

IHC-P, WB

Immunogen

A portion of amino acids 297-483 from the human protein was used as the immunogen for the CD10 antibody.

Preservatives

0.2 mg/ml in 1X PBS with 0.1 mg/ml rAlbumin (US sourced) and 0.05% sodium azide

Storage

Store the CD10 antibody at 2-8°C (with azide) or aliquot and store at -20°C or colder (without azide).

Note

For research use only

Application notes

The stated application concentrations are suggested starting points. Titration of the CD10 antibody may be required due to differences in protocols and secondary/substrate sensitivity.

Formula

0.2 mg/ml in 1X PBS with 0.1 mg/ml BSA (US sourced) and 0.05% sodium azide

Isotype

Mouse IgG2c, kappa

Clonality

Monoclonal

Purity

Protein G affinity chromatography

Uniprot ID

P08473

Hazard Information

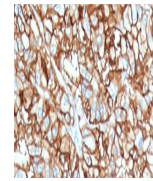
This CD10 antibody is available for research use only.

Dilution Range

Immunohistochemistry (FFPE): 1-2ug/ml for 30 min at RT, Western blot: 1-2ug/ml

Expiration Date

12 months from date of receipt.



IHC staining of FFPE human renal cell ca...



Western blot testing of human kidney lys...