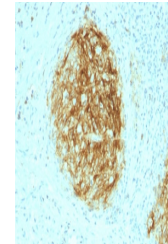


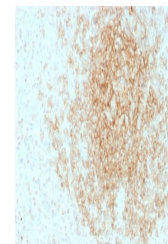
Product Datasheet

CD21 Antibody (orb534077)

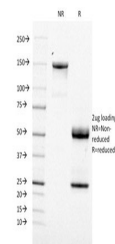
Description	Recognizes a protein of 140kDa, which is identified as the complement receptor 2 (CR2)/CD21. Its epi...
Species/Host	Mouse
Reactivity	Human
Conjugation	Unconjugated
Tested Applications	ELISA, IHC-P
Immunogen	A portion of amino acids 44-196 were used as the immunogen for the CD21 antibody.
Preservatives	0.2 mg/ml in 1X PBS with 0.1 mg/ml rAlbumin (US sourced) and 0.05% sodium azide
Storage	Store the CD21 antibody at 2-8°C (with azide) or aliquot and store at -20°C or colder (without azide).
Note	For research use only
Application notes	Optimal dilution of the CD21 antibody should be determined by the researcher.
Formula	0.2 mg/ml in 1X PBS with 0.1 mg/ml BSA (US sourced) and 0.05% sodium azide
Isotype	Mouse IgG1, kappa
Clonality	Monoclonal
Purity	Protein G affinity chromatography
Uniprot ID	P20023
Hazard Information	This CD21 antibody is available for research use only.
Dilution Range	ELISA (order BSA/sodium azide-free format for coating), Immunohistochemistry (FFPE): 1-2ug/ml for 30 min at RT
Expiration Date	12 months from date of receipt.



IHC testing of FFPE human follicular den...



IHC testing of FFPE human tonsil tissue ...



SDS-PAGE analysis of purified, BSA-free ...