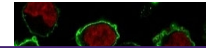

Product Datasheet

CD43 Antibody (orb534047)

Description

CD43 is one of the major glycoproteins of thymocytes


Species/Host

Rabbit

Reactivity

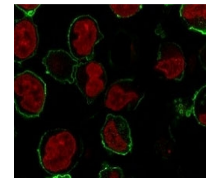
Human

Conjugation

Unconjugated

Tested Applications

IHC-P



Immunofluorescence staining of human K562...

Immunogen

Recombinant human protein was used as the immunogen for the recombinant CD43 antibody.

Preservatives

0.2 mg/ml in 1X PBS with 0.1 mg/ml rAlbumin (US sourced) and 0.05% sodium azide

Storage

Store the recombinant CD43 antibody at 2-8°C (with azide) or aliquot and store at -20°C or colder (without azide).



Western blot testing of human K562 cell

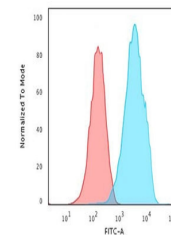
Note

For research use only

Application notes

The stated application concentrations are suggested starting points. Titration of the recombinant CD43 antibody may be required due to differences in protocols and secondary/substrate sensitivity.1. The prediluted format is supplied in a dropper bottle and is optimized for use in IHC. After epitope retrieval step (if required), drip mAb solution onto the tissue section and incubate at RT for 30 min.

...



Flow cytometry testing of PFA-fixed huma...

Formula

0.2 mg/ml in 1X PBS with 0.1 mg/ml BSA (US sourced) and 0.05% sodium azide

Isotype

Rabbit IgG, kappa

Clonality

Recombinant

Purity

Protein A affinity chromatography

Uniprot ID

P16150

Hazard Information

This recombinant CD43 antibody is available for research use only.

Dilution Range

Western blot: 1-2ug/ml, Flow cytometry: 1-2ug/million cells, Immunofluorescence: 1-2ug/ml, Immunohistochemistry (FFPE): 1-2ug/ml for 30 min at RT (1)

Expiration Date

12 months from date of receipt.