

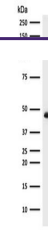
Product Datasheet

KRT19 Antibody / Cytokeratin 19 (orb534045)

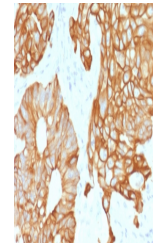
Description

Keratin 19 is a type I keratin. The type I cytokeratins

Species/Host	Rabbit
Reactivity	Human
Conjugation	Unconjugated
Tested Applications	IHC-P, WB
Immunogen	Human mammary epithelial organoids were used as the immunogen for the recombinant Cytokeratin 19 antibody.
Preservatives	0.2 mg/ml in 1X PBS with 0.1 mg/ml rAlbumin (US sourced) and 0.05% sodium azide
Storage	Store the recombinant Cytokeratin 19 antibody at 2-8°C (with azide) or aliquot and store at -20°C or colder (without azide).
Note	For research use only
Application notes	The stated application concentrations are suggested starting points. Titration of the recombinant Cytokeratin 19 antibody may be required due to differences in protocols and secondary/substrate sensitivity.1. The prediluted format is supplied in a dropper bottle and is optimized for use in IHC. After epitope retrieval step (if required), drip mAb solution onto the tissue section and incubate at RT for 30 min.
Formula	0.2 mg/ml in 1X PBS with 0.1 mg/ml BSA (US sourced) and 0.05% sodium azide
Isotype	Rabbit IgG, kappa
Clonality	Recombinant
Purity	Protein A affinity chromatography
Uniprot ID	P08727
Hazard Information	This recombinant Cytokeratin 19 antibody is available for research use only.
Dilution Range	Western blot: 1-2ug/ml, Immunohistochemistry (FFPE): 1-2ug/ml for 30 min at RT, Prediluted IHC only format: incubate for 30 min at RT (1)
Expiration Date	12 months from date of receipt.



Western blot testing of human HepG2 anti...



IHC testing of FFPE human colon tissue w...