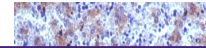

Product Datasheet

Glypican 3 Antibody / GPC3 (orb534018)

Description

Glypican-3 is a proteoglycan that bears heparan


Species/Host

Rabbit

Reactivity

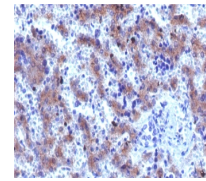
Human

Conjugation

Unconjugated

Tested Applications

FACS, IF, IHC-P



IHC staining of FFPE human hepatocellular carcinoma tissue.

Immunogen

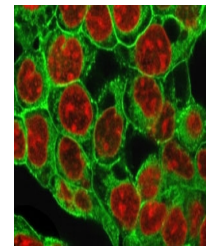
Recombinant full-length human protein was used as the immunogen for the recombinant Glypican 3 antibody.

Preservatives

0.2 mg/ml in 1X PBS with 0.1 mg/ml rAlbumin (US sourced) and 0.05% sodium azide

Storage

Store the recombinant Glypican 3 antibody at 2-8°C (with azide) or aliquot and store at -20°C or colder (without azide).



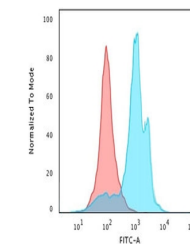
Immunofluorescent staining of methanol-fixed cells.

Note

For research use only

Application notes

The stated application concentrations are suggested starting points. Titration of the recombinant Glypican 3 antibody may be required due to differences in protocols and secondary/substrate sensitivity. The prediluted format is supplied in a dropper bottle and is optimized for use in IHC. After epitope retrieval step (if required), drip mAb solution onto the tissue section and incubate at RT for 30 min.



Flow cytometry testing of methanol-fixed cells.

Formula

0.2 mg/ml in 1X PBS with 0.1 mg/ml BSA (US sourced) and 0.05% sodium azide

Isotype

Rabbit IgG, kappa

Clonality

Recombinant

Purity

Protein A affinity chromatography

Uniprot ID

P51654

Hazard Information

This recombinant Glypican 3 antibody is available for research use only.

Dilution Range

Flow cytometry: 1-2ug/million cells, Immunofluorescence: 1-2ug/ml, Immunohistochemistry (FFPE): 1-2ug/ml for 30 min at RT, Prediluted IHC only format: incubate for 30 min at RT (1)

Expiration Date

12 months from date of receipt.