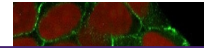

Product Datasheet

E-Cadherin Antibody / CDH1 (orb534005)

Description

Cadherins behave as both receptors and ligands for


Species/Host

Rabbit

Reactivity

Human

Conjugation

Unconjugated

Tested Applications

FACS, IF, IHC-P, WB

Immunogen

Recombinant human protein was used as the immunogen for the recombinant E-Cadherin antibody.

Preservatives

0.2 mg/ml in 1X PBS with 0.1 mg/ml rAlbumin (US sourced) and 0.05% sodium azide

Storage

Store the recombinant E-Cadherin antibody at 2-8°C (with azide) or aliquot and store at -20°C or colder (without azide).

Note

For research use only

Application notes

The stated application concentrations are suggested starting points. Titration of the recombinant E-Cadherin antibody may be required due to differences in protocols and secondary/substrate sensitivity.¹ The prediluted format is supplied in a dropper bottle and is optimized for use in IHC. After epitope retrieval step (if required), drip mAb solution onto the tissue section and incubate at RT for 30 min.

Formula

0.2 mg/ml in 1X PBS with 0.1 mg/ml BSA (US sourced) and 0.05% sodium azide

Isotype

Rabbit IgG, kappa

Clonality

Recombinant

Purity

Protein A affinity chromatography

Uniprot ID

P12830

Hazard Information

This recombinant E-Cadherin antibody is available for research use only.

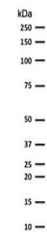
Dilution Range

Western blot: 1-2ug/ml, Immunofluorescence: 1-2ug/ml, Flow cytometry: 1-2ug/million cells, Immunohistochemistry (FFPE): 1-2ug/ml for 30 min at RT, Prediluted IHC only format : incubate for 30 min at RT (1)

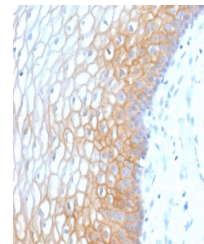
Expiration Date

12 months from date of receipt.

Immunofluorescent staining of human MCF7...



Western blot testing of human MCF-7 cell...



Formalin-fixed, paraffin-embedded human ...