
Product Datasheet

Histone H1 Antibody (orb533994)

Description

Five major families of histones exist: H1/H5, H2A, H2B,


Species/Host

Rabbit

Reactivity

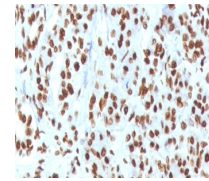
Human

Conjugation

Unconjugated

Tested Applications

FACS, IF, IHC-P



IHC staining of FFPE human pancreas tiss...

Immunogen

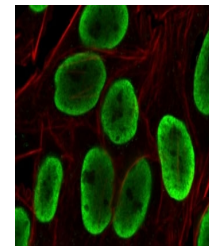
Recombinant full-length human protein was used as the immunogen for the recombinant Histone H1 antibody.

Preservatives

0.2 mg/ml in 1X PBS with 0.1 mg/ml rAlbumin (US sourced) and 0.05% sodium azide

Storage

Store the recombinant Histone H1 antibody at 2-8°C (with azide) or aliquot and store at -20°C or colder (without azide).



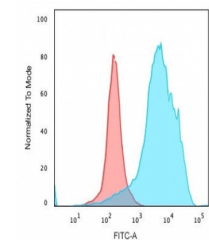
Immunofluorescent staining of PFA-fixed ...

Note

For research use only

Application notes

The stated application concentrations are suggested starting points. Titration of the recombinant Histone H1 antibody may be required due to differences in protocols and secondary/substrate sensitivity.¹ The prediluted format is supplied in a dropper bottle and is optimized for use in IHC. After epitope retrieval step (if required), drip mAb solution onto the tissue section and incubate at RT for 30 min.



Flow cytometry testing of PFA-fixed huma...

Formula

0.2 mg/ml in 1X PBS with 0.1 mg/ml BSA (US sourced) and 0.05% sodium azide

Isotype

Rabbit IgG, kappa

Clonality

Recombinant

Purity

Protein A affinity chromatography

Uniprot ID

P07305

Hazard Information

This recombinant Histone H1 antibody is available for research use only.

Dilution Range

Flow cytometry: 1-2ug/million cells, Immunofluorescence: 1-2ug/ml, Immunohistochemistry (FFPE): 1-2ug/ml for 30 min at RTPrediluted IHC only format: incubate for 30 min at RT (1)

Expiration Date

12 months from date of receipt.