
Product Datasheet

Estrogen Receptor alpha Antibody (orb533992)

Description

Estrogen receptor (ER) is an important regulator of


Species/Host

Rabbit

Reactivity

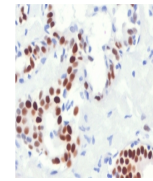
Human

Conjugation

Unconjugated

Tested Applications

IHC-P, WB



IHC staining of FFPE human breast cancer...

Immunogen

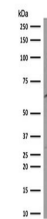
Human Estrogen Receptor alpha protein was used as the immunogen for this recombinant Estrogen Receptor alpha antibody.

Preservatives

0.2 mg/ml in 1X PBS with 0.1 mg/ml rAlbumin (US sourced) and 0.05% sodium azide

Storage

Store the recombinant Estrogen Receptor alpha antibody at 2-8°C (with azide) or aliquot and store at -20°C or colder (without azide).



Western blot testing of human MCF7 cell ...

Note

For research use only

Application notes

The stated application concentrations are suggested starting points. Titration of the recombinant Estrogen Receptor alpha antibody may be required due to differences in protocols and secondary/substrate sensitivity.1. The prediluted format is supplied in a dropper bottle and is optimized for use in IHC. After epitope retrieval step (if required), drip mAb solution onto the tissue section and incubate at RT for 30 min.

Formula

0.2 mg/ml in 1X PBS with 0.1 mg/ml BSA (US sourced) and 0.05% sodium azide

Isotype

Rabbit IgG, kappa

Clonality

Recombinant

Purity

Protein A affinity chromatography

Uniprot ID

P03372

Hazard Information

This recombinant Estrogen Receptor alpha antibody is available for research use only.

Dilution Range

Western blot: 1-2ug/ml, Immunohistochemistry (FFPE): 1-2ug/ml for 30 min at RT, Prediluted IHC only format: incubate for 30 min at RT (1)

Expiration Date

12 months from date of receipt.