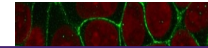

Product Datasheet

Beta Catenin Antibody (orb533983)

Description

The protein encoded by this gene is part of a complex


Species/Host

Rabbit

Reactivity

Human

Conjugation

Unconjugated

Tested Applications

IF, IHC-P, WB

Immunofluorescent staining of human HeLa...

Immunogen

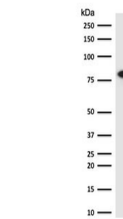
Beta Catenin protein was used as the immunogen for the recombinant beta Catenin antibody.

Preservatives

0.2 mg/ml in 1X PBS with 0.1 mg/ml rAlbumin (US sourced) and 0.05% sodium azide

Storage

Store the recombinant beta Catenin antibody at 2-8°C (with azide) or aliquot and store at -20°C or colder (without azide).



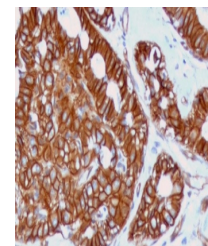
Western blot testing of human HeLa antib...

Note

For research use only

Application notes

Titration of the recombinant beta Catenin antibody may be required due to differences in protocols and secondary/substrate sensitivity.1. The prediluted format is supplied in a dropper bottle and is optimized for use in IHC. After epitope retrieval step (if required), drip mAb solution onto the tissue section and incubate at RT for 30 min.



IHC staining of FFPE human breast cancer...

Formula

0.2 mg/ml in 1X PBS with 0.1 mg/ml BSA (US sourced) and 0.05% sodium azide

Isotype

Rabbit IgG, kappa

Clonality

Recombinant

Purity

Protein A affinity chromatography

Uniprot ID

[P35222](#)

Hazard Information

This recombinant beta Catenin antibody is available for research use only.

Dilution Range

Western blot: 1-2ug/ml, Immunofluorescence: 1-2ug/ml, Immunohistochemistry (FFPE): 1-2ug/ml, Prediluted IHC only format : incubate for 30 min at RT (1)

Expiration Date

12 months from date of receipt.