
Product Datasheet

CD86 Antibody (orb533979)

Description

Recognizes a protein of 70kDa, which is identified as CD86.


Species/Host

Rabbit

Reactivity

Human

Conjugation

Unconjugated

Tested Applications

FACS, IF, IHC-P, WB

Immunogen

Recombinant human full-length protein was used as the immunogen for the recombinant CD86 antibody.

Preservatives

0.2 mg/ml in 1X PBS with 0.1 mg/ml rAlbumin (US sourced) and 0.05% sodium azide

Storage

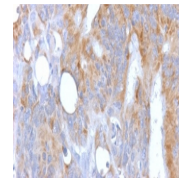
Store the recombinant CD86 antibody at 2-8°C (with azide) or aliquot and store at -20°C or colder (without azide).

Note

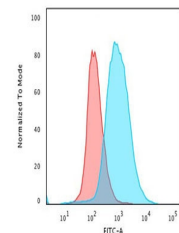
For research use only

Application notes

Optimal dilution of the recombinant CD86 antibody should be determined by the researcher.1. The prediluted format is supplied in a dropper bottle and is optimized for use in IHC. After epitope retrieval step (if required), drip mAb solution onto the tissue section and incubate at RT for 30 min.



IHC testing of FFPE human colon with rec...



Flow cytometry testing of human Ramos ce...

Formula

0.2 mg/ml in 1X PBS with 0.1 mg/ml BSA (US sourced) and 0.05% sodium azide

Isotype

Rabbit IgG, kappa

Clonality

Recombinant

Purity

Protein A affinity chromatography

Uniprot ID

P42081

Hazard Information

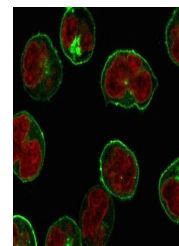
This recombinant CD86 antibody is available for research use only.

Dilution Range

Western blot: 1-2ug/ml, Flow cytometry: 1-2ug/million cells, Immunofluorescence/Immunocytochemistry: 2-4ug/ml, Immunohistochemistry (FFPE): 2-4ug/ml for 30 min at RT, Prediluted IHC only format: incubate for 30 min at RT (1)

Expiration Date

12 months from date of receipt.



IF/ICC staining of human Raji cells with...