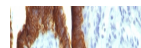

Product Datasheet

**EpCAM Antibody / Cytoplasmic domain
(orb533928)**

Description

EGP40 is a 40-43kDa transmembrane epithelial



an...

Species/Host

Mouse

Reactivity

Human

Conjugation

Unconjugated

Tested Applications

IHC-P

IHC testing of FFPE human ovarian carcin...

Immunogen

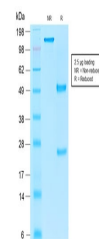
A portion of amino acids 289-350 (cytoplasmic domain) was used as the immunogen for the recombinant EpCAM antibody.

Preservatives

0.2 mg/ml in 1X PBS with 0.1 mg/ml rAlbumin (US sourced) and 0.05% sodium azide

Storage

Store the recombinant EpCAM antibody at 2-8°C (with azide) or aliquot and store at -20°C or colder (without azide).



SDS-PAGE analysis of purified, BSA-free ...

Note

For research use only

Application notes

Optimal dilution of the recombinant EpCAM antibody should be determined by the researcher.1. The prediluted format is supplied in a dropper bottle and is optimized for use in IHC. After epitope retrieval step (if required), drip mAb solution onto the tissue section and incubate at RT for 30 min.

Formula

0.2 mg/ml in 1X PBS with 0.1 mg/ml BSA (US sourced) and 0.05% sodium azide

Isotype

Mouse IgG1

Clonality

Recombinant

Purity

Protein G affinity chromatography

Uniprot ID

P16422

Hazard Information

This recombinant EpCAM antibody is available for research use only.

Dilution Range

Immunohistochemistry (FFPE): 0.5-1ug/ml for 30 min at RT

Expiration Date

12 months from date of receipt.