

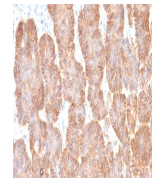
---

## Product Datasheet

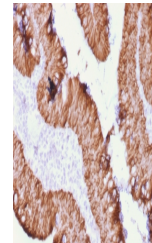
### EpCAM Antibody / Extracellular domain (orb533882)

**Description**

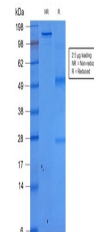
EGP40 is a 40-43kDa transmembrane epithelial



IHC testing of FFPE human skin with reco...



IHC testing of FFPE human rectal mass ti...



SDS-PAGE analysis of purified, BSA-free ...

**Species/Host**

Mouse

**Reactivity**

Human

**Conjugation**

Unconjugated

**Tested Applications**

IHC-P, WB

**Immunogen**

A portion of amino acids 100-224 (extracellular domain) was used as the immunogen for the recombinant EpCAM antibody.

**Preservatives**

0.2 mg/ml in 1X PBS with 0.1 mg/ml rAlbumin (US sourced) and 0.05% sodium azide

**Storage**

Store the recombinant EpCAM antibody at 2-8°C (with azide) or aliquot and store at -20°C or colder (without azide).

**Note**

For research use only

**Application notes**

Optimal dilution of the recombinant EpCAM antibody should be determined by the researcher.1. The prediluted format is supplied in a dropper bottle and is optimized for use in IHC. After epitope retrieval step (if required), drip mAb solution onto the tissue section and incubate at RT for 30 min.

**Formula**

0.2 mg/ml in 1X PBS with 0.1 mg/ml BSA (US sourced) and 0.05% sodium azide

**Isotype**

Mouse IgG1, kappa

**Clonality**

Recombinant

**Purity**

Protein G affinity chromatography

**Uniprot ID**
[P16422](#)
**Hazard Information**

This recombinant EpCAM antibody is available for research use only.

**Dilution Range**

Western blot: 0.5-1ug/ml, Immunohistochemistry (FFPE): 0.5-1ug/ml for 30 min at RT

**Expiration Date**

12 months from date of receipt.