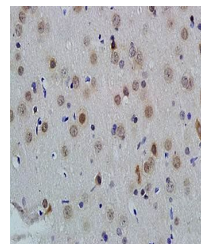


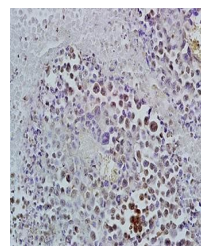
Product Datasheet

ID1 antibody (orb5316)

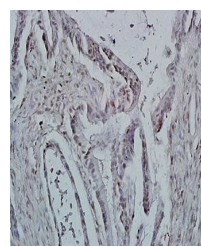
Description	ID1 antibody
Species/Host	Rabbit
Reactivity	Human, Mouse, Rat
Conjugation	Unconjugated
Tested Applications	FC, ICC
Immunogen	KLH conjugated synthetic peptide derived from human ID1 (51-155/155 aa)
Target	ID1
Preservatives	0.01M TBS(pH7.4) with 1% rAlbumin, 0.03% Proclin300 and 50% Glycerol.
Form/Appearance	Liquid
Concentration	1mg/ml
Storage	Shipped at 4°C. Store at -20 °C for one year. Avoid repeated freeze/thaw cycles.
Note	For research use only
Isotype	IgG
Clonality	Polyclonal
MW	16 kDa
Uniprot ID	P41134
Dilution Range	ICC=1:100, Flow-Cyt=1ug/Test, IHC-F=1:100-500, IF=1:200-800, ELISA=1:5000-10000
Expiration Date	12 months from date of receipt.



Immunohistochemical analysis of formalin...



IHC-P of mouse lymphoma tissue (Dilution...



IHC-P of human colon carcinoma tissue (D...