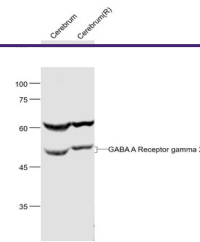

Product Datasheet

GABA A Receptor gamma 2 antibody (orb5291)

Description

GABA A Receptor gamma 2



Western blot: Cerebrum(Mouse); Cerebrum(Ra...

Species/Host	Rabbit
Reactivity	Human, Mouse, Rat
Conjugation	Unconjugated
Tested Applications	ICC, IF, IHC-P, WB
Immunogen	KLH conjugated synthetic peptide derived from human GABRG2/GABA A Receptor gamma 2 (41-140/475 aa)
Target	GABA A Receptor gamma 2
Preservatives	0.01M TBS(pH7.4) with 1% rAlbumin, 0.03% Proclin300 and 50% Glycerol.
Form/Appearance	Liquid
Concentration	1mg/ml
Storage	Maintain refrigerated at 2-8°C for up to 2 weeks. For long term storage store at -20°C in small aliquots to prevent freeze-thaw cycles.
Note	For research use only
Isotype	IgG
Clonality	Polyclonal
MW	51 kDa
Uniprot ID	P18507
Dilution Range	WB=1:500-2000, IHC-P=1:100-500, IF=1:200-800, IHC-F=1:100-500, ICC=1:100-500, ELISA=1:5000-10000
Expiration Date	12 months from date of receipt.