
Product Datasheet

SHH antibody (orb527297)

Description

Goat polyclonal antibody to SHH

Species/Host

Goat

Reactivity

Canine, Human, Rat

Conjugation

Unconjugated

Tested Applications

ELISA, FC, IF, WB

Target

SHH

Preservatives

Supplied at 0.5 mg/ml in Tris saline, 0.02% sodium azide, pH 7.3 with 0.5% bovine serum albumin. Aliquot and store at -20°C. Minimize freezing and thawing.

Storage

Aliquot and store at -20°C. Minimize freezing and thawing.

Note

For research use only

Application notes

WB: Approx 48kDa band observed in Human Liver lysates (calculated MW of 49.6kDa according to NP_000184.1 Recommended concentration: 1-3µg/ml. Primary incubation 1 hour at room temperature. Preliminary testing was unsuccessful on Rat Liver for this particular . Notes: Immunofluorescence: Strong expression of the protein seen in the membranes of HeLa, U251 and NIH3T3 cells. Recommended concentration: 10µg/ml. Flow Cytometry: Flow cytometric analysis of HeLa cells. Recommended concen

Protein Sequence

DSEALHPLGMAVK

Clonality

Polyclonal

MW

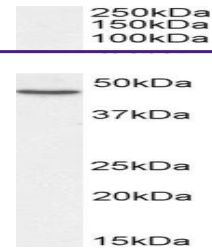
49.6

Entrez
6469
Dilution Range

P-ELISA: 1: 32000

Expiration Date

12 months from date of receipt.

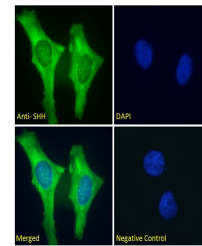


250kDa
150kDa
100kDa

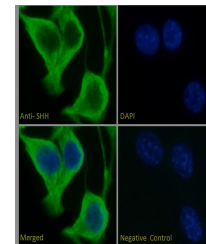


50kDa
37kDa
25kDa
20kDa
15kDa

WB analysis of Human Liver lysate using ...



Immunofluorescence analysis of HeLa cell...



Immunofluorescence analysis of NIH3T3 ce...