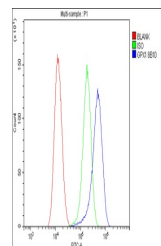


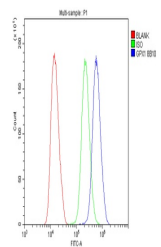
Product Datasheet

GPX1 Antibody (monoclonal, 8B10) (orb527061)

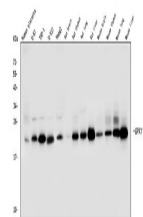
Description	GPX1 Antibody (monoclonal, 8B10)
Species/Host	Mouse
Reactivity	Human, Mouse, Rat
Conjugation	Unconjugated
Tested Applications	FC, ICC, IF, IHC, WB
Immunogen	A synthetic peptide corresponding to a sequence in the middle region of human GPX1 (116-146aa EVNGAGAHPLFAFLREALPAPSDDATALMTD), different from the related mouse sequence by six amino acids and from the related rat sequence by five amino acids.
Form/Appearance	Lyophilized
Concentration	Adding 0.2 ml of distilled water will yield a concentration of 500 µg/ml.
Storage	Store at -20°C for one year from date of receipt. After reconstitution, at 4°C for one month. It can also be aliquotted and stored frozen at -20°C for six months. Avoid repeated freeze-thaw cycles.
Note	For research use only
Application notes	Add 0.2ml of distilled water will yield a concentration of 500µg/ml.
Isotype	Mouse IgG2b
Clonality	Monoclonal
MW	22 kDa
Uniprot ID	P07203
Expiration Date	12 months from date of receipt.



Flow Cytometry analysis of U87 cells usi...



Flow Cytometry analysis of U251 cells us...



WB: Lane 1: human placenta tissue; 2: U-87 C...