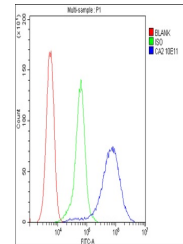


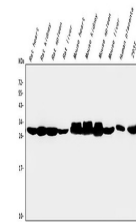
## Product Datasheet

### CA2 Antibody (monoclonal, 10E11) (orb527049)

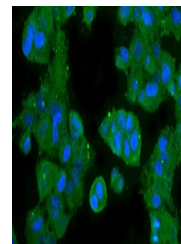
|                            |   |
|----------------------------|---|
| <b>Description</b>         | CA2 Antibody (monoclonal, 10E11)  |
| <b>Species/Host</b>        | Mouse   |
| <b>Reactivity</b>          | Human, Mouse, Rat   |
| <b>Conjugation</b>         | Unconjugated  |
| <b>Tested Applications</b> | FC, ICC, IF, IHC, WB  |
| <b>Immunogen</b>           | E.coli-derived human CA2 recombinant protein (Position: S2-K260). Human CA2 shares 81.1% and 80.7% amino acid (aa) sequence identity with mouse and rat CA2, respectively.                            |
| <b>Form/Appearance</b>     | Lyophilized   |
| <b>Concentration</b>       | Adding 0.2 ml of distilled water will yield a concentration of 500 µg/ml.   |
| <b>Storage</b>             | Store at -20°C for one year from date of receipt. After reconstitution, at 4°C for one month. It can also be aliquotted and stored frozen at -20°C for six months. Avoid repeated freeze-thaw cycles. |
| <b>Note</b>                | For research use only   |
| <b>Application notes</b>   | Add 0.2ml of distilled water will yield a concentration of 500µg/ml.  |
| <b>Isotype</b>             | Mouse IgG2b   |
| <b>Clonality</b>           | Monoclonal  |
| <b>MW</b>                  | 28 kDa  |
| <b>Uniprot ID</b>          | <a href="#">P00918</a>  |
| <b>Expiration Date</b>     | 12 months from date of receipt.   |



Flow Cytometry analysis of 293T cells us...



WB analysis using anti-CA2 antibody.Lane...



IF analysis of CA2 using anti-CA2 antibo...