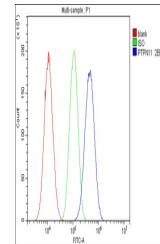


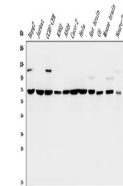
## Product Datasheet

# SHP2/PTPN11 Antibody (monoclonal, 2E6) (orb527043)

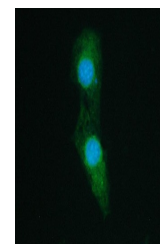
<b>Description</b>	SHP2/PTPN11 Antibody (monoclonal, 2E6)
<b>Species/Host</b>	Mouse
<b>Reactivity</b>	Human, Mouse, Rat
<b>Conjugation</b>	Unconjugated
<b>Tested Applications</b>	FC, ICC, IF, IHC, WB
<b>Immunogen</b>	A synthetic peptide corresponding to a sequence at the N-terminus of human SHP2 (69-99aa EK FATLAELVQYYMEHHGQLKEKNGDVIELK), identical to the related mouse and rat sequences.
<b>Form/Appearance</b>	Lyophilized
<b>Concentration</b>	Adding 0.2 ml of distilled water will yield a concentration of 500 µg/ml.
<b>Storage</b>	Store at -20°C for one year from date of receipt. After reconstitution, at 4°C for one month. It can also be aliquotted and stored frozen at -20°C for six months. Avoid repeated freeze-thaw cycles.
<b>Note</b>	For research use only
<b>Application notes</b>	Add 0.2ml of distilled water will yield a concentration of 500µg/ml.
<b>Isotype</b>	Mouse IgG2b
<b>Clonality</b>	Monoclonal
<b>MW</b>	70 kDa
<b>Uniprot ID</b>	<a href="#">Q06124</a>
<b>Expiration Date</b>	12 months from date of receipt.



Flow Cytometry analysis of A549 cells us...



WB analysis using anti-SHP2/PTPN11 antib...



IF analysis of SHP2/PTPN11 using anti-SH...