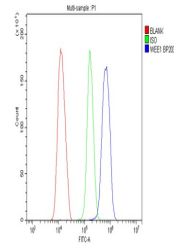


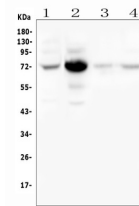
## Product Datasheet

### WEE1 Antibody (orb527041)

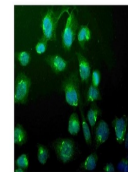
<b>Description</b>	WEE1 Antibody
<b>Species/Host</b>	Rabbit
<b>Reactivity</b>	Human, Mouse, Rat
<b>Conjugation</b>	Unconjugated
<b>Tested Applications</b>	FC, ICC, IF, IHC, WB
<b>Immunogen</b>	A synthetic peptide corresponding to a sequence of human WEE1 (ELNAEKFKNSLLQKELKKAQMAKAAAEEERALFTDR).
<b>Form/Appearance</b>	Lyophilized
<b>Concentration</b>	Adding 0.2 ml of distilled water will yield a concentration of 500 µg/ml.
<b>Storage</b>	Store at -20°C for one year from date of receipt. After reconstitution, at 4°C for one month. It can also be aliquotted and stored frozen at -20°C for six months. Avoid repeated freeze-thaw cycles.
<b>Note</b>	For research use only
<b>Application notes</b>	Western blot, 0.1-0.5µg/ml Immunohistochemistry (Paraffin-embedded Section), 0.5-1µg/ml Immunocytochemistry/Immunofluorescence, 2µg/ml Flow Cytometry, 1-3µg/1x10 <sup>6</sup> cells
<b>Isotype</b>	Rabbit IgG
<b>Clonality</b>	Polyclonal
<b>MW</b>	72 kDa
<b>Uniprot ID</b>	<a href="#">P30291</a>
<b>Expiration Date</b>	12 months from date of receipt.



Flow Cytometry analysis of SiHa cells us...



WB analysis of WEE1 using anti-WEE1 anti...



IF analysis of WEE1 using anti-WEE1 anti...