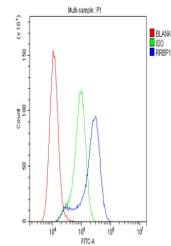


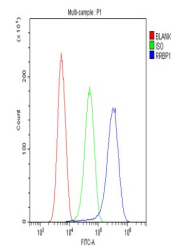
Product Datasheet

RRBP1 Antibody (orb527038)

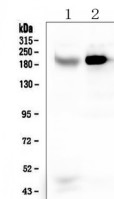
Description	RRBP1 Antibody
Species/Host	Rabbit
Reactivity	Human, Mouse, Rat
Conjugation	Unconjugated
Tested Applications	FC, ICC, IF, IHC, IHC-Fr, WB
Immunogen	A synthetic peptide corresponding to a sequence of human RRBP1 (EKEKKLTSDLGRAATRLQELLKTTQEQQLAREKDTVKKLQEQLEKAED).
Form/Appearance	Lyophilized
Concentration	Adding 0.2 ml of distilled water will yield a concentration of 500 µg/ml.
Storage	Store at -20°C for one year from date of receipt. After reconstitution, at 4°C for one month. It can also be aliquotted and stored frozen at -20°C for six months. Avoid repeated freeze-thaw cycles.
Note	For research use only
Application notes	Western blot, 0.1-0.5µg/ml Immunohistochemistry (Paraffin-embedded Section), 0.5-1µg/ml Immunohistochemistry (Frozen Section), 0.5-1µg/ml Immunocytochemistry/Immunofluorescence, 2µg/ml Flow Cytometry, 1-3µg/1x10 ⁶ cells
Isotype	Rabbit IgG
Clonality	Polyclonal
MW	200 kDa
Uniprot ID	Q9P2E9
Expiration Date	12 months from date of receipt.



Flow Cytometry analysis of A549 cells us...



Flow Cytometry analysis of SIHA cells us...



WB analysis of RRBP1 using anti-RRBP1 an...