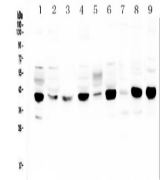


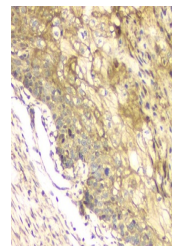
Product Datasheet

MCUR1 Antibody (orb527032)

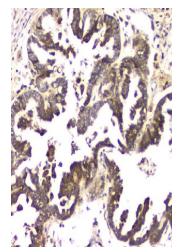
Description	MCUR1 Antibody
Species/Host	Rabbit
Reactivity	Human, Mouse, Rat
Conjugation	Unconjugated
Tested Applications	IHC, WB
Immunogen	A synthetic peptide corresponding to a sequence of human MCUR1 (ATQQAEEIIVSALVKILEANMDIVYKDMVTKMQQE).
Form/Appearance	Lyophilized
Concentration	Adding 0.2 ml of distilled water will yield a concentration of 500 µg/ml.
Storage	Store at -20°C for one year from date of receipt. After reconstitution, at 4°C for one month. It can also be aliquotted and stored frozen at -20°C for six months. Avoid repeated freeze-thaw cycles.
Note	For research use only
Application notes	Western blot, 0.1-0.5µg/ml Immunohistochemistry (Paraffin-embedded Section), 0.5-1µg/ml
Isotype	Rabbit IgG
Clonality	Polyclonal
MW	40 kDa
Uniprot ID	Q96AQ8
Expiration Date	12 months from date of receipt.



WB analysis of MCUR1 using anti-MCUR1 antibody.



IHC analysis of MCUR1 using anti-MCUR1 antibody.



IHC analysis of MCUR1 using anti-MCUR1 antibody.