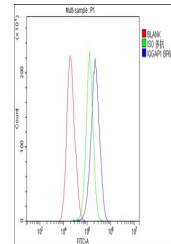


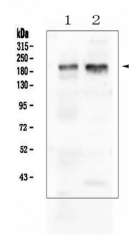
Product Datasheet

IQGAP1 Antibody (orb527028)

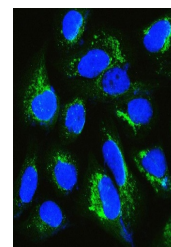
Description	IQGAP1 Antibody
Species/Host	Rabbit
Reactivity	Human, Mouse, Rat
Conjugation	Unconjugated
Tested Applications	ELISA, FC, ICC, IF, IHC, WB
Immunogen	E. coli-derived human IQGAP1 recombinant protein (D1374-K1657).
Form/Appearance	Lyophilized
Concentration	Adding 0.2 ml of distilled water will yield a concentration of 500 µg/ml.
Storage	Store at -20°C for one year from date of receipt. After reconstitution, at 4°C for one month. It can also be aliquotted and stored frozen at -20°C for six months. Avoid repeated freeze-thaw cycles.
Note	For research use only
Application notes	Western blot, 0.1-0.5µg/ml Immunohistochemistry (Paraffin-embedded Section), 0.5-1µg/ml Immunocytochemistry/Immunofluorescence, 2µg/ml Flow Cytometry, 1-3µg/1x10 ⁶ cells Direct ELISA, 0.1-0.5µg/ml
Isotype	Rabbit IgG
Clonality	Polyclonal
MW	189 kDa
Uniprot ID	P46940
Expiration Date	12 months from date of receipt.



Flow Cytometry analysis of HepG2 cells u...



WB analysis of IQGAP1 using anti-IQGAP1 ...



IF analysis of IQGAP1 using anti-IQGAP1 ...