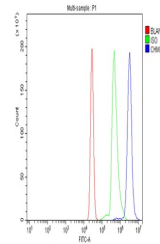


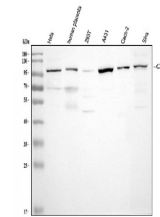
Product Datasheet

CHM Antibody (orb527021)

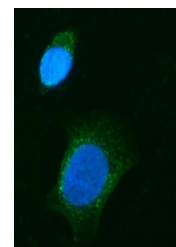
Description	CHM Antibody
Species/Host	Rabbit
Reactivity	Human
Conjugation	Unconjugated
Tested Applications	FC, ICC, IF, IHC, WB
Immunogen	A synthetic peptide corresponding to a sequence of human CHM (QDQILENEEAIALSRKDKTIQHVEVFCYASQDLHED).
Form/Appearance	Lyophilized
Concentration	Adding 0.2 ml of distilled water will yield a concentration of 500 µg/ml.
Storage	Store at -20°C for one year from date of receipt. After reconstitution, at 4°C for one month. It can also be aliquotted and stored frozen at -20°C for six months. Avoid repeated freeze-thaw cycles.
Note	For research use only
Application notes	Western blot, 0.1-0.5µg/ml Immunohistochemistry (Paraffin-embedded Section), 2-5µg/ml Immunocytochemistry/Immunofluorescence, 5µg/ml Flow Cytometry, 1-3µg/1x10 ⁶ cells
Isotype	Rabbit IgG
Clonality	Polyclonal
MW	100 kDa
Uniprot ID	P24386
Expiration Date	12 months from date of receipt.



Flow Cytometry analysis of U937 cells us...



WB analysis of CHM using anti-CHM antibo...



IF analysis of CHM using anti-CHM antibo...