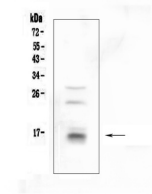


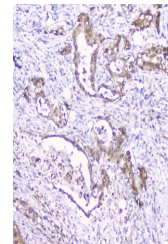
Product Datasheet

CDA Antibody (orb527019)

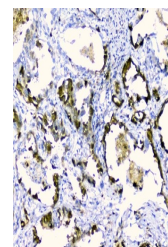
Description	CDA Antibody
Species/Host	Rabbit
Reactivity	Human, Mouse, Rat
Conjugation	Unconjugated
Tested Applications	IHC, WB
Immunogen	A synthetic peptide corresponding to a sequence of human CDA (MAQKRPACTLKPECVQQLLVCSQEAKK).
Form/Appearance	Lyophilized
Concentration	Adding 0.2 ml of distilled water will yield a concentration of 500 µg/ml.
Storage	Store at -20°C for one year from date of receipt. After reconstitution, at 4°C for one month. It can also be aliquotted and stored frozen at -20°C for six months. Avoid repeated freeze-thaw cycles.
Note	For research use only
Application notes	Western blot, 0.1-0.5µg/ml Immunohistochemistry (Paraffin-embedded Section), 0.5-1µg/ml
Isotype	Rabbit IgG
Clonality	Polyclonal
MW	16 kDa
Uniprot ID	P32320
Expiration Date	12 months from date of receipt.



WB analysis of CDA using anti-CDA antibody.



IHC analysis of CDA using anti-CDA antibody.



IHC analysis of CDA using anti-CDA antibody.