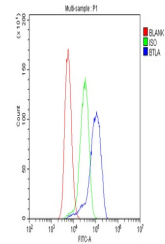


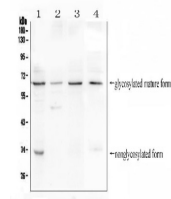
Product Datasheet

CD272/BTLA Antibody (orb526985)

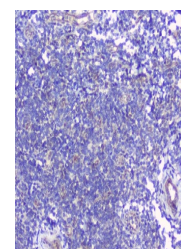
Description	CD272/BTLA Antibody
Species/Host	Rabbit
Reactivity	Human, Mouse
Conjugation	Unconjugated
Tested Applications	FC, ICC, IHC, IHC-Fr, WB
Immunogen	A synthetic peptide corresponding to a sequence of human CD272/BTLA (QSNLIESHSTTLYVTDVKSASERPSKDEMASRPWLLYRL).
Form/Appearance	Lyophilized
Concentration	Adding 0.2 ml of distilled water will yield a concentration of 500 µg/ml.
Storage	Store at -20°C for one year from date of receipt. After reconstitution, at 4°C for one month. It can also be aliquotted and stored frozen at -20°C for six months. Avoid repeated freeze-thaw cycles.
Note	For research use only
Application notes	Add 0.2ml of distilled water will yield a concentration of 500ug/ml.
Isotype	Rabbit IgG
Clonality	Polyclonal
MW	65 kDa
Uniprot ID	Q7Z6A9
Expiration Date	12 months from date of receipt.



Flow Cytometry analysis of THP-1 cells u...



WB analysis of CD272 using anti-CD272 an...



IHC analysis of CD272/BTLA using anti-CD...