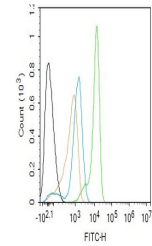


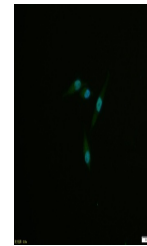
Product Datasheet

MSK1 (phospho-Ser376) antibody (orb526655)

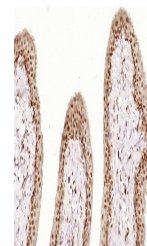
Description	MSK1 (phospho-Ser376) antibody
Species/Host	Rabbit
Reactivity	Human, Rat
Conjugation	Unconjugated
Tested Applications	FC, ICC, IHC-P, WB
Immunogen	KLH conjugated synthesised phosphopeptide derived from human MSK1 around the phosphorylation site of Ser376 (GY(p-S)FV)
Target	Phospho-MSK1 (Ser376)
Preservatives	0.01M TBS(pH7.4) with 1% rAlbumin, 0.03% Proclin300 and 50% Glycerol.
Form/Appearance	Liquid
Concentration	1mg/ml
Storage	Maintain refrigerated at 2-8°C for up to 2 weeks. For long term storage store at -20°C in small aliquots to prevent freeze-thaw cycles.
Note	For research use only
Isotype	IgG
Clonality	Recombinant
MW	90 kDa
Uniprot ID	075582
Dilution Range	WB=1:500-2000, IHC-P=1:20-200, ICC=1:100, Flow-Cyt=2ug/Test, IHC-F=1:20-200, IF=1:20-200
Expiration Date	12 months from date of receipt.



Flow cytometry of U-937. Primary Antibody...



ICC analysis of SH-SY5Y cell using Phosp...



IHC-P analysis of rat bladder using Phos...