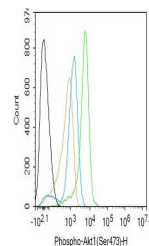


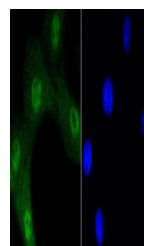
Product Datasheet

Akt1 (phospho-Ser473) antibody (orb526646)

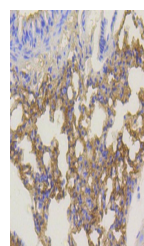
| | |
|----------------------------|---|
| Description | Akt1 (phospho-Ser473) antibody |
| Species/Host | Rabbit |
| Reactivity | Human, Mouse |
| Conjugation | Unconjugated |
| Tested Applications | FC, ICC, IHC-P, WB |
| Immunogen | KLH conjugated Synthesised phosphopeptide derived from human Akt1 around the phosphorylation site of Ser473 (QF(p-S)YS) |
| Target | Phospho-Akt1 (Ser473) |
| Preservatives | 0.01M TBS(pH7.4) with 1% rAlbumin, 0.03% Proclin300 and 50% Glycerol. |
| Form/Appearance | Liquid |
| Concentration | 1mg/ml |
| Storage | Maintain refrigerated at 2-8°C for up to 2 weeks. For long term storage store at -20°C in small aliquots to prevent freeze-thaw cycles. |
| Note | For research use only |
| Isotype | IgG |
| Clonality | Recombinant |
| MW | 56 kDa |
| Uniprot ID | P31749 |
| Dilution Range | WB=1:500-2000, IHC-P=1:50-200, ICC=1:100, Flow-Cyt=2ug/Test, IHC-F=1:50-200, IF=1:50-200 |
| Expiration Date | 12 months from date of receipt. |



Flow cytometry of U-937.Primary Antibody...



ICC analysis of NIH/3T3 cell using Phosp...



IHC-P analysis of mouse lung using Phosp...