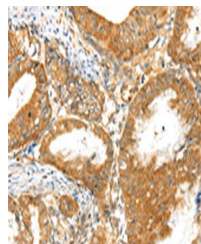


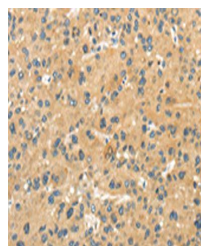
Product Datasheet

MPP6 antibody (orb525357)

| | |
|----------------------------|-----------------------------------------------------------------------------------------------------------------------------------------|
| Description | MPP6 antibody |
| Species/Host | Rabbit |
| Reactivity | Human, Mouse |
| Conjugation | Unconjugated |
| Tested Applications | ELISA, IHC |
| Immunogen | Synthetic peptide of Human MPP6 |
| Target | MPP6 |
| Preservatives | -20°C, pH7.4 PBS, 0.05% NaN3, 40% Glycerol |
| Form/Appearance | Liquid |
| Storage | Maintain refrigerated at 2-8°C for up to 2 weeks. For long term storage store at -20°C in small aliquots to prevent freeze-thaw cycles. |
| Note | For research use only |
| Isotype | IgG |
| Clonality | Polyclonal |
| Uniprot ID | Q9NZW5 |
| Dilution Range | ELISA:1:2000-1:10000, IHC-P:1:30-1:150 |
| Expiration Date | 12 months from date of receipt. |



Immunohistochemistry of paraffin-embedde...



Immunohistochemistry of paraffin-embedde...