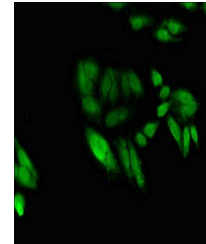


Product Datasheet

EGR2 antibody (orb52519)

Description	EGR2 antibody
Species/Host	Rabbit
Reactivity	Human, Rat
Conjugation	Unconjugated
Tested Applications	ELISA, IF, WB
Immunogen	Recombinant Human E3 SUMO-protein ligase EGR2 protein (42-245AA)
Target	EGR2
Preservatives	Preservative: 0.03% Proclin 300. Constituents: 50% Glycerol
Form/Appearance	Liquid
Storage	Maintain refrigerated at 2-8°C for up to 2 weeks. For long term storage store at -20°C in small aliquots to prevent freeze-thaw cycles.
Note	For research use only
Isotype	IgG
Clonality	Polyclonal
Uniprot ID	P11161
Dilution Range	WB:1:500-5000, IF:1:50-200
Expiration Date	12 months from date of receipt.



Immunofluorescence analysis of HeLa cell...