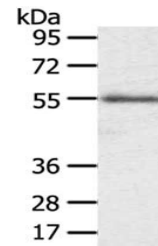


Product Datasheet

SLC43A2 antibody (orb525024)

Description	SLC43A2 antibody
Species/Host	Rabbit
Reactivity	Human, Mouse
Conjugation	Unconjugated
Tested Applications	ELISA, WB
Immunogen	Synthetic peptide of Human SLC43A2
Target	SLC43A2
Preservatives	-20°C, pH7.4 PBS, 0.05% NaN ₃ , 40% Glycerol
Form/Appearance	Liquid
Storage	Maintain refrigerated at 2-8°C for up to 2 weeks. For long term storage store at -20°C in small aliquots to prevent freeze-thaw cycles.
Note	For research use only
Isotype	IgG
Clonality	Polyclonal
Uniprot ID	Q8N370
Dilution Range	ELISA:1:1000-1:2000, WB:1:200-1:1000
Expiration Date	12 months from date of receipt.



Western blot analysis of SLC43A2 antibody...