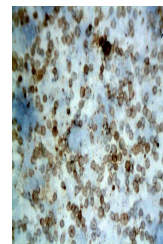


Product Datasheet

FLASH antibody (orb5249)

Description	FLASH antibody
Species/Host	Rabbit
Reactivity	Mouse
Conjugation	Unconjugated
Tested Applications	ELISA, IF, IHC-Fr, IHC-P, WB
Immunogen	KLH conjugated synthetic peptide derived from human FLASH/CASP8AP2 (1861-1982/1982 aa)
Target	FLASH
Preservatives	0.01M TBS(pH7.4) with 1% rAlbumin, 0.03% Proclin300 and 50% Glycerol.
Form/Appearance	Liquid
Concentration	1mg/ml
Storage	Shipped at 4°C. Store at -20 °C for one year. Avoid repeated freeze/thaw cycles.
Note	For research use only
Isotype	IgG
Clonality	Polyclonal
MW	218 kDa
Uniprot ID	Q9UKL3
Expiration Date	12 months from date of receipt.



IHC-P of mouse thymic lymphocytes using ...