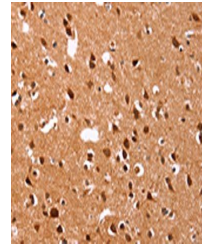


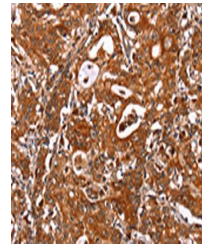
Product Datasheet

ICAM3 antibody (orb524312)

| | |
|----------------------------|---|
| Description | ICAM3 antibody |
| Species/Host | Rabbit |
| Reactivity | Human |
| Conjugation | Unconjugated |
| Tested Applications | ELISA, IHC |
| Immunogen | Synthetic peptide of Human ICAM3 |
| Target | ICAM3 |
| Preservatives | -20°C, pH7.4 PBS, 0.05% NaN3, 40% Glycerol |
| Form/Appearance | Liquid |
| Storage | Upon receipt, store at -20°C or -80°C. Avoid repeated freeze. |
| Note | For research use only |
| Isotype | IgG |
| Clonality | Polyclonal |
| Uniprot ID | P32942 |
| Dilution Range | ELISA:1:1000-1:2000, IHC-P:1:25-1:100 |
| Expiration Date | 12 months from date of receipt. |



Immunohistochemistry of paraffin-embedde...



Immunohistochemistry of paraffin-embedde...