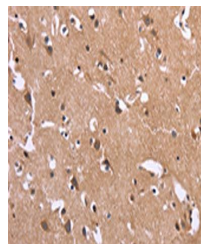


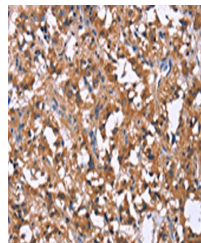
Product Datasheet

SLC52A1 antibody (orb524245)

Description	SLC52A1 antibody
Species/Host	Rabbit
Reactivity	Human
Conjugation	Unconjugated
Tested Applications	ELISA, IHC
Immunogen	Synthetic peptide of Human SLC52A1
Target	SLC52A1
Preservatives	-20°C, pH7.4 PBS, 0.05% NaN3, 40% Glycerol
Form/Appearance	Liquid
Storage	Upon receipt, store at -20°C or -80°C. Avoid repeated freeze.
Note	For research use only
Isotype	IgG
Clonality	Polyclonal
Uniprot ID	Q9NWF4
Dilution Range	ELISA:1:2000-1:5000, IHC-P:1:50-1:200
Expiration Date	12 months from date of receipt.



Immunohistochemistry of paraffin-embedde...



Immunohistochemistry of paraffin-embedde...