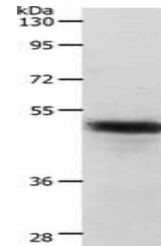


Product Datasheet

CERS2 antibody (orb523510)

Description	CERS2 antibody
Species/Host	Rabbit
Reactivity	Human, Mouse
Conjugation	Unconjugated
Tested Applications	ELISA, WB
Immunogen	Synthetic peptide of Human CERS2
Target	CERS2
Preservatives	-20°C, pH7.4 PBS, 0.05% NaN ₃ , 40% Glycerol
Form/Appearance	Liquid
Storage	Maintain refrigerated at 2-8°C for up to 2 weeks. For long term storage store at -20°C in small aliquots to prevent freeze-thaw cycles.
Note	For research use only
Isotype	IgG
Clonality	Polyclonal
Uniprot ID	Q96G23
Dilution Range	ELISA:1:2000-1:5000, WB:1:500-1:2000
Expiration Date	12 months from date of receipt.



Western blot analysis of Human liver ca...