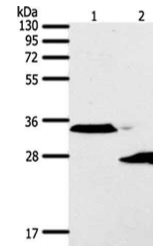


Product Datasheet

SFTPA1 antibody (orb523425)

Description	SFTPA1 antibody
Species/Host	Rabbit
Reactivity	Human, Rat
Conjugation	Unconjugated
Tested Applications	ELISA, WB
Immunogen	Synthetic peptide of Human SFTPA1
Target	SFTPA1
Preservatives	-20°C, pH7.4 PBS, 0.05% NaN ₃ , 40% Glycerol
Form/Appearance	Liquid
Storage	Upon receipt, store at -20°C or -80°C. Avoid repeated freeze.
Note	For research use only
Isotype	IgG
Clonality	Polyclonal
Uniprot ID	Q8IWL2
Dilution Range	ELISA:1:1000-1:5000, WB:1:200-1:1000
Expiration Date	12 months from date of receipt.



Western blot analysis of Lane 1-2: A549...