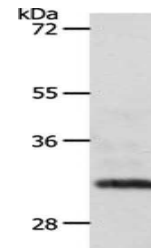


Product Datasheet

SLC2A4RG antibody (orb523400)

Description	SLC2A4RG antibody
Species/Host	Rabbit
Reactivity	Human
Conjugation	Unconjugated
Tested Applications	ELISA, WB
Immunogen	Synthetic peptide of Human SLC2A4RG
Target	SLC2A4RG
Preservatives	-20°C, pH7.4 PBS, 0.05% NaN ₃ , 40% Glycerol
Form/Appearance	Liquid
Storage	Upon receipt, store at -20°C or -80°C. Avoid repeated freeze.
Note	For research use only
Isotype	IgG
Clonality	Polyclonal
Uniprot ID	Q9NR83
Dilution Range	ELISA:1:1000-1:5000, WB:1:200-1:1000
Expiration Date	12 months from date of receipt.



Western blot analysis of Human fetal ki...