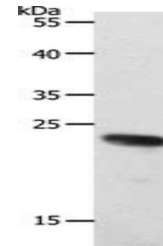


Product Datasheet

RAMP2 antibody (orb522870)

| | |
|----------------------------|---|
| Description | RAMP2 antibody |
| Species/Host | Rabbit |
| Reactivity | Human |
| Conjugation | Unconjugated |
| Tested Applications | ELISA, WB |
| Immunogen | Synthetic peptide of Human RAMP2 |
| Target | RAMP2 |
| Preservatives | -20°C, pH7.4 PBS, 0.05% NaN ₃ , 40% Glycerol |
| Form/Appearance | Liquid |
| Storage | Maintain refrigerated at 2-8°C for up to 2 weeks. For long term storage store at -20°C in small aliquots to prevent freeze-thaw cycles. |
| Note | For research use only |
| Isotype | IgG |
| Clonality | Polyclonal |
| Uniprot ID | O60895 |
| Dilution Range | ELISA:1:1000-1:5000, WB:1:500-1:2000 |
| Expiration Date | 12 months from date of receipt. |



Western blot analysis of 231 cells using...