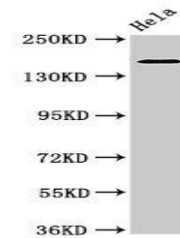


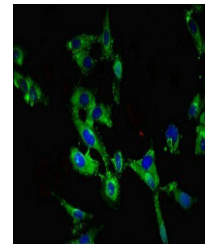
Product Datasheet

ROBO1 antibody (orb52282)

Description	ROBO1 antibody
Species/Host	Rabbit
Reactivity	Human
Conjugation	Unconjugated
Tested Applications	ELISA, IF, WB
Immunogen	Recombinant Human Roundabout homolog 1 protein (29-143AA)
Target	ROBO1
Preservatives	Preservative: 0.03% Proclin 300. Constituents: 50% Glycerol
Form/Appearance	Liquid
Storage	Maintain refrigerated at 2-8°C for up to 2 weeks. For long term storage store at -20°C in small aliquots to prevent freeze-thaw cycles.
Note	For research use only
Isotype	IgG
Clonality	Polyclonal
Uniprot ID	Q9Y6N7
Dilution Range	WB:1:500-5000, IF:1:50-200
Expiration Date	12 months from date of receipt.



Western blot analysis of HeLa whole cell...



Immunofluorescence analysis of HeLa cell...