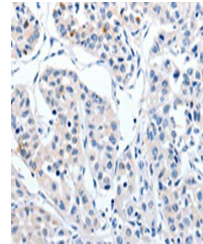


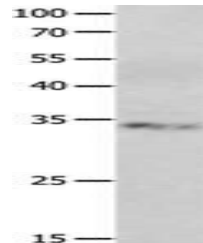
Product Datasheet

RBFOX3 antibody (orb522798)

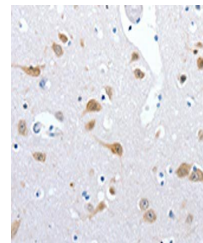
Description	RBFOX3 antibody
Species/Host	Rabbit
Reactivity	Human, Mouse
Conjugation	Unconjugated
Tested Applications	ELISA, IHC, WB
Immunogen	Synthetic peptide of Human RBFOX3
Target	RBFOX3
Preservatives	-20°C, pH7.4 PBS, 0.05% NaN ₃ , 40% Glycerol
Form/Appearance	Liquid
Storage	Upon receipt, store at -20°C or -80°C. Avoid repeated freeze.
Note	For research use only
Isotype	IgG
Clonality	Polyclonal
Uniprot ID	A6NFN3
Dilution Range	ELISA:1:1000-1:2000, WB:1:200-1:1000, IHC-P:1:15-1:50
Expiration Date	12 months from date of receipt.



Immunohistochemistry of paraffin-embedde...



Western blot aanalysis of Jurkat cellsus...



Immunohistochemistry of paraffin-embedde...