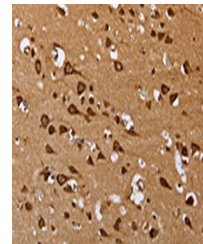


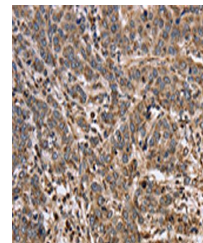
Product Datasheet

EPOR antibody (orb522346)

| | |
|----------------------------|---|
| Description | EPOR antibody |
| Species/Host | Rabbit |
| Reactivity | Human, Mouse, Rat |
| Conjugation | Unconjugated |
| Tested Applications | ELISA, IHC |
| Immunogen | Synthetic peptide of Human EPOR |
| Target | EPOR |
| Preservatives | -20°C, pH7.4 PBS, 0.05% NaN ₃ , 40% Glycerol |
| Form/Appearance | Liquid |
| Storage | Upon receipt, store at -20°C or -80°C. Avoid repeated freeze. |
| Note | For research use only |
| Isotype | IgG |
| Clonality | Polyclonal |
| Uniprot ID | P19235 |
| Dilution Range | ELISA:1:2000-1:5000, IHC-P:1:50-1:200 |
| Expiration Date | 12 months from date of receipt. |



Immunohistochemistry of paraffin-embedde...



Immunohistochemistry of paraffin-embedde...