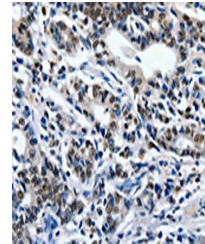


Product Datasheet

ENPP3 antibody (orb522332)

Description	ENPP3 antibody
Species/Host	Rabbit
Reactivity	Human, Mouse, Rat
Conjugation	Unconjugated
Tested Applications	ELISA, IHC
Immunogen	Synthetic peptide of Human ENPP3
Target	ENPP3
Preservatives	-20°C, pH7.4 PBS, 0.05% NaN ₃ , 40% Glycerol
Form/Appearance	Liquid
Storage	Maintain refrigerated at 2-8°C for up to 2 weeks. For long term storage store at -20°C in small aliquots to prevent freeze-thaw cycles.
Note	For research use only
Isotype	IgG
Clonality	Polyclonal
Uniprot ID	O14638
Dilution Range	ELISA:1:2000-1:10000, IHC-P:1:50-1:200
Expiration Date	12 months from date of receipt.



Immunohistochemistry
of paraffin-embedde...