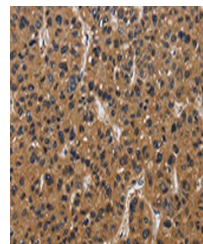


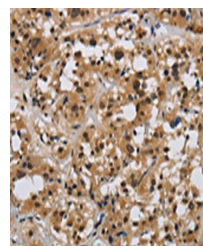
## Product Datasheet

### E2F4 antibody (orb522309)

|                            |   |
|----------------------------|---|
| <b>Description</b>         | E2F4 antibody   |
| <b>Species/Host</b>        | Rabbit  |
| <b>Reactivity</b>          | Human, Mouse  |
| <b>Conjugation</b>         | Unconjugated  |
| <b>Tested Applications</b> | ELISA, IHC  |
| <b>Immunogen</b>           | Synthetic peptide of Human E2F4                               |
| <b>Target</b>              | E2F4  |
| <b>Preservatives</b>       | -20°C, pH7.4 PBS, 0.05% NaN <sub>3</sub> , 40% Glycerol       |
| <b>Form/Appearance</b>     | Liquid  |
| <b>Storage</b>             | Upon receipt, store at -20°C or -80°C. Avoid repeated freeze. |
| <b>Note</b>                | For research use only   |
| <b>Isotype</b>             | IgG   |
| <b>Clonality</b>           | Polyclonal  |
| <b>Uniprot ID</b>          | <a href="#">Q16254</a>  |
| <b>Dilution Range</b>      | ELISA:1:2000-1:5000, IHC-P:1:50-1:200                         |
| <b>Expiration Date</b>     | 12 months from date of receipt.                               |



Immunohistochemistry of paraffin-embedde...



Immunohistochemistry of paraffin-embedde...